



## Sound Light & Entry Sensor (RMA-SLE-SEN) Installation Note

AVTECH's Sound Light & Entry Sensor (SLE) effectively monitors unstaffed or low-traffic areas: while its built-in sensors detect the occurrence of sound and light in a room, its attached magnet/proximity switch detects the open/closed status of entry points like doors and windows. A convenient general alarm feature allows you to choose whether to configure just one alert if any of those conditions occur, or to alert separately for each.



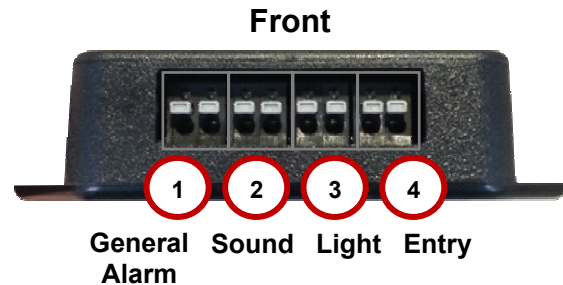
### SLE Package Contents

- One (1) Sound Light & Entry Sensor
- One (1) magnet & proximity switch pair
- One (1) 25' speaker wire cable
- Two (2) mounting screws
- One (1) Installation Note (You're reading it now.)

### SLE Features

#### Switch Sensor Output Ports (Front)

Each switch port on the front of the SLE corresponds to a different feature of the sensor. The features and normal/alarm states are shown below.



# Feature	The normal state, OPEN, means...	The alarm state, CLOSED, means...
<b>1 General Alarm</b>	All other ports are open	At least one other port is closed
<b>2 Sound</b>	No sound is detected	Sound is detected
<b>3 Light</b>	No light is detected	Light is detected
<b>4 Entry</b>	No entry is detected (magnet & proximity switch are together)	Entry is detected (magnet & proximity switch are apart)

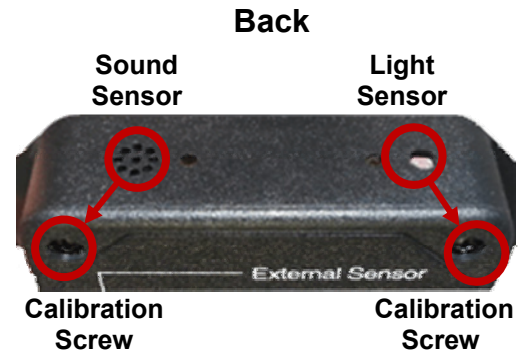
If you wish to configure individual alerts for each condition, you may connect output ports 2 through 4 to Room Alert separately; if you'd like just 1 alert for any condition, you may simply connect the General Alarm output port. Please see the installation section later in this note for instructions.

## Sound Light & Entry Sensor (RMA-SLE-SEN)

### Sound & Light Sensors (Back)

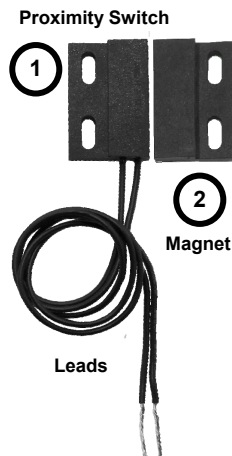
The sound and light sensors, located at the back of the SLE, have corresponding calibration screws located above them at the top of the unit. You may adjust how much sound and light it takes to trigger the sensors by turning the screws:

- Tighten the screw clockwise to decrease the sensitivity.
- Loosen the screw counter-clockwise to increase the sensitivity.



Once you have finished installing and configuring your SLE in Room Alert, test the sound and light sensors to ensure they trigger at the exposure you expect.

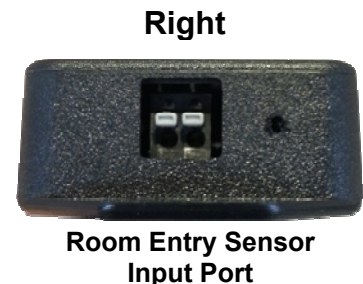
### Room Entry Sensor (Right)



AVTECH's Room Entry Sensor, comprised of a magnet and proximity switch, comes with its leads pre-attached to the SLE's Room Entry Input Port.

The Room Entry Sensor is available as a separate product (RMA-RE1-SEN) and can also connect directly to a switch port on any Room Alert model.

Please see the Room Entry Sensor Installation Note for mounting instructions.



## Install Your SLE

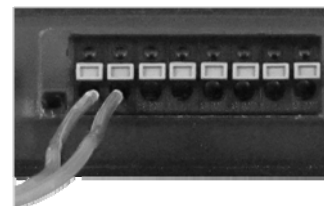


Do not use this sensor in hazardous (classified) locations or life/safety applications.

### Step 1: Connect your SLE ID box to Room Alert.

Your Sound Light & Entry Sensor comes with one 25' speaker cable pre-attached to the General Alarm (#1) output port. Please contact your Product Specialist if you need more speaker cable for the other switch ports.

1. Separate and strip the free ends of the speaker cable. Expose about ¼" of wire.



## Sound Light & Entry Sensor (RMA-SLE-SEN)

2. Connect the free end of the speaker wire to an open switch sensor port on your Room Alert. The SLE's output ports are non-polarized, so you may insert either side of the wire into either contact.
3. If you would like to configure individual alarms for each condition, repeat the steps above for the Sound (#2), Light (#3) and Entry (#4) output ports.



Do not connect the dry contacts on AVTECH products or other electrical appliances to live circuits.  
Use only low-voltage 2-wire cable to connect dry contacts.

### Step 2: Mount the components.

#### *SLE ID Box*

Position the SLE so that the sound and light sensors are not blocked; you may wish to face the back of the SLE upwards for this reason. You may mount the SLE on a vertical surface with the included screws through the flange holes.

#### *Room Entry Sensor*

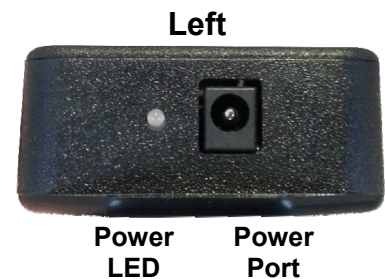
Please see the Room Entry Sensor Installation Note for instructions on mounting the magnet and proximity sensor.

### Step 3: Connect your SLE ID box to a power source.

Your SLE comes with AVTECH's International Power Adapter.

1. First connect AVTECH's International Power Adapter to the power port on the SLE.
2. Then plug it into a power source.

Note that the LED illuminates when power is on.



Use only AVTECH's International Power Adapter with AVTECH monitors and sensors; others could damage your product and will void the warranty.

## Configure Your SLE

### With Room Alert's Built-In Web Interface

Navigate to **Settings** → **Sensors** in your Room Alert web interface. The options you see below will vary depending on the model.

The screenshot shows the Room Alert web interface. At the top, there is a red header with the text "Room Alert™ Advanced Computer Room Environment Monitoring, Alerting & Automatic Corrective Action". Below the header is a navigation bar with four tabs: "Status", "Settings", "Help", and "About". The "Settings" tab is selected. Below the navigation bar, there is a status bar showing "MAC Address: XX-XX-XX-XX-XX-XX" and "Version: X.X.X". The main content area is titled "Switch Sensor Settings" and contains a grid of 12 sensor settings. Each sensor setting includes a "Sensor X Label" field, an "Alarm On" dropdown menu, and an "Alarm Profile" dropdown menu. The "Alarm On" dropdown menu for Sensor 1 is open, showing options: "Closed", "Open", "Disabled", and "Closed". The "Save Settings" and "Reset Defaults" buttons are visible at the bottom left of the settings area.

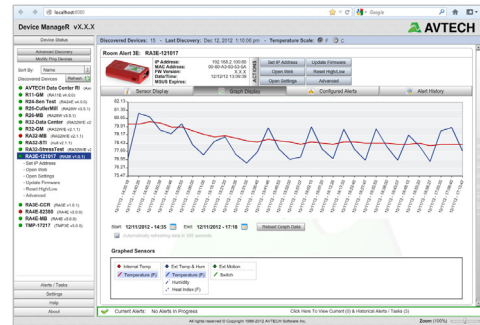
1. Scroll down to “Switch Sensor Settings.”
2. Find the label that matches the Room Alert port you connected your SLE output port to. For example, if you used the first switch sensor port on your Room Alert, look for “Sensor 1 Label”; if you used the second, look for “Sensor 2 Label,” and so on.
3. In “Sensor X Label,” you may leave the default name or enter something more descriptive, such as “SLE Gen Rm 10” or “Server 3 Light”
4. In “Alarm On,” choose “Closed.” The normal state of the General Alarm, Sound, Light and Entry switch sensors on the SLE is “Open.”
5. For models with the “Use Alarm Profile” feature: if you have configured Alarm Profiles in the Alarm Options screen, you may choose a profile from the drop-down menu. The default is “Profile 1.”
6. Click **Accept Changes** at the bottom of your screen to temporarily save your settings. You may now navigate to another screen; however, if you close the web interface before the final step, you will lose your changes.
7. Click **Save Settings** in the navigation bar to the left of your screen. Your Room Alert will automatically reboot and commit your changes.

## Sound Light & Entry Sensor (RMA-SLE-SEN)

### With AVTECH's Device Manager Software For Advanced Functionality

For advanced functionality and easy management of multiple units, configure your sensor with AVTECH's Device Manager, the software that comes FREE with the purchase of any Room Alert monitor.

You may download the current version from your customer account at [AVTECH.com/Downloads](http://AVTECH.com/Downloads) while your Maintenance, Support & Update Service (MSUS) is current. If your service and access has lapsed, please contact your Product Specialist about reactivating them.



### Sound Light Entry Sensor Features & Specifications

<b>Environment Condition Monitored</b> .....	Sound, light and entry
<b>Type Of Sensor</b> .....	Switch
Normal State .....	Open (No sound, light, entry detected)
<b>Power Supply</b> .....	AVTECH's 1A 5VDC International Power Adapter
Included .....	Yes
<b>Sensor Cable Type</b> .....	Low-voltage, 2-wire speaker cable
Included .....	Yes
Length .....	25'
Maximum Extendible Length .....	900'
<b>Compatible Products</b> .....	Any Room Alert or Wireless Sensor Hub model

AVT-140502.02